



# **G20 TASK FORCE ON THE ESTABLISHMENT OF A GLOBAL ALLIANCE AGAINST HUNGER AND POVERTY**

**MACS-G20-Brazil Meeting  
May 16, 2024**



# THE WORLD IS WAY OFF-TRACK TO MEET SDGS 1 AND 2 TARGETS. INEQUALITY IS RISING FAST

## POVERTY REDUCTION STOPS

---

- The world has lost three years in the fight against extreme poverty;
- 8.6% of global population (691 million) projected to live in extreme poverty in 2023;
- Low-income countries seeing increase in poverty levels even from 2022-23.

## HUNGER IS RISING

---

- ± 735 million people facing hunger in 2022;
- 9.2% of world population compared to 7.9% in 2019;
- 2.4 billion living under moderate or acute food insecurity;
- over 3.1 billion people cannot afford an adequate diet.

## INEQUALITY AGGRAVATES

---

- In contrast to previous years, global inequality is rising both within and across countries;
- Income loss of poorest 10% thrice as high as the world's 10% richest;
- Unprecedented levels of indebtedness in many countries hindering recovery;
- Top 1% of emitters responsible for more carbon emissions than the entire bottom half of the global population.

# GLOBAL ALLIANCE AGAINST HUNGER AND POVERTY



## PROPOSED MISSION AND GOALS

---

**MISSION STATEMENT:** Support and accelerate efforts to eliminate hunger and extreme poverty (SDGs 1 and 2) while reducing inequalities, championing a just transition, and contributing to the achievement of other SDGs.

### **MISSION/GOALS:**

- Provide sustained, political drive at the highest level by the Group of 20 and other Global Alliance Members.
- Promote better alignment of international support to enable **large-scale country-level implementation** of policy instruments and programmes that were proven effective to eliminate hunger and extreme poverty.



**FIVE SPECIAL REPORTS TO SUPPORT THE  
WORK OF THE TASK FORCE PRESENTED  
AND DISCUSSED**



**TRENDS AND POLICY OPTIONS TO  
FIGHT POVERTY AND HUNGER**



**ACCESS TO FOOD AND BASIC  
HUMAN DIGNITY – SOCIAL  
PROTECTION**



**SUSTAINABLE PRODUCTION OF  
HEALTHY FOOD FOR ALL**



**RESILIENCE OF THE POOREST TO  
MULTIPLE CRISES**

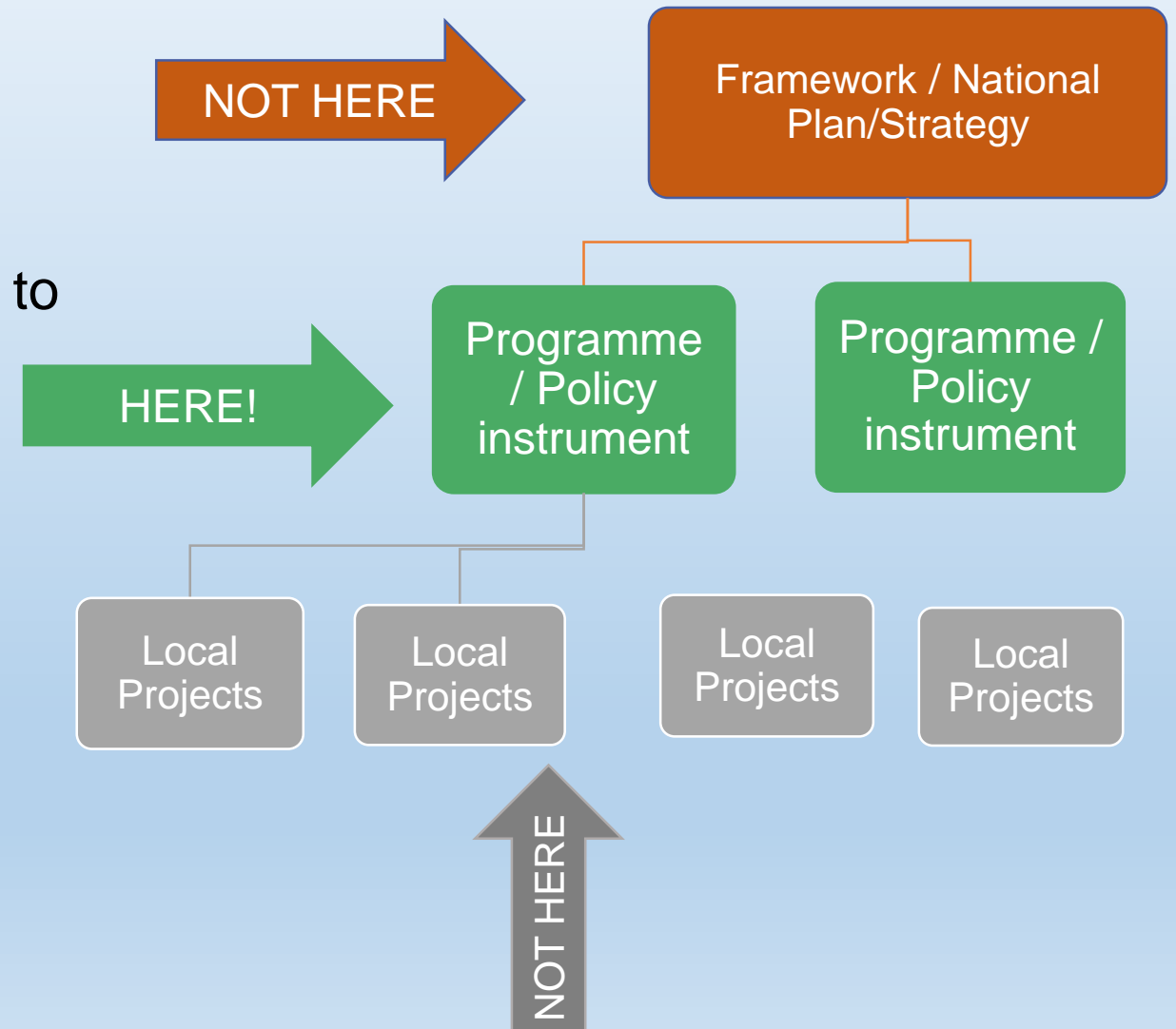


**FINANCING THE FIGHT AGAINST POVERTY AND HUNGER  
- MOBILISING RESOURCES FOR A SDG RESET**



# PROGRAM LEVEL OPERATION – HANDS ON, AT SCALE

- The focus of the **Alliance's actions would be on the Programme /Policy instrument level,**
- This marks a crucial difference with respect to several international initiatives which emphasise either pilot projects or broad frameworks
- Advantages: Closer to concrete practice; smaller barrier to entry; avoid duplication of frameworks; large scale impact; flexibility to synergize with many different plans, mechanisms and frameworks at all levels.



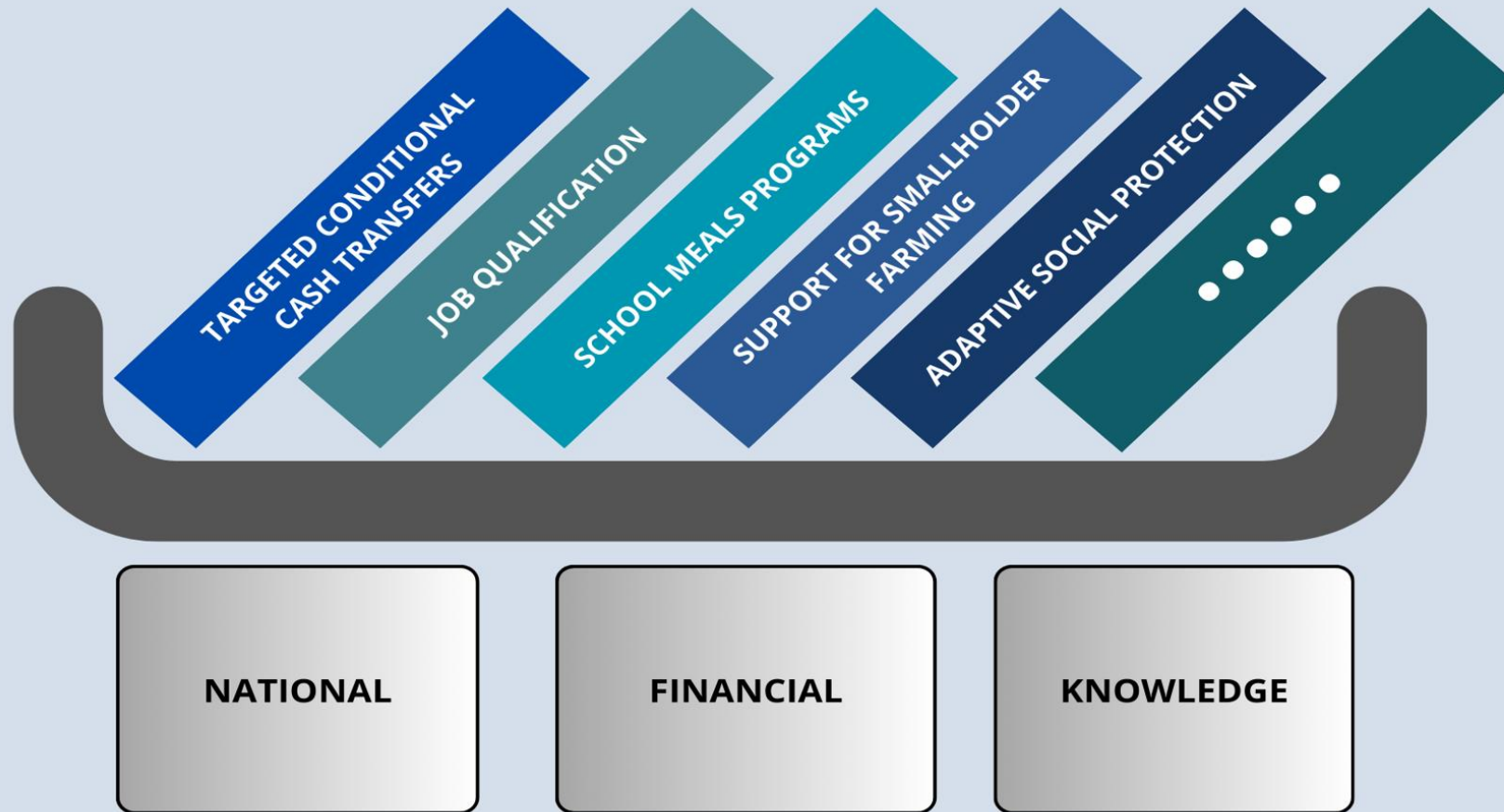


**The core basket of policies is proposed to be the major organizing principle for the Alliance – translating the state of art of best practices and international guidelines into actionable, practical, evidence-based country-led interventions that partners can rally to support**

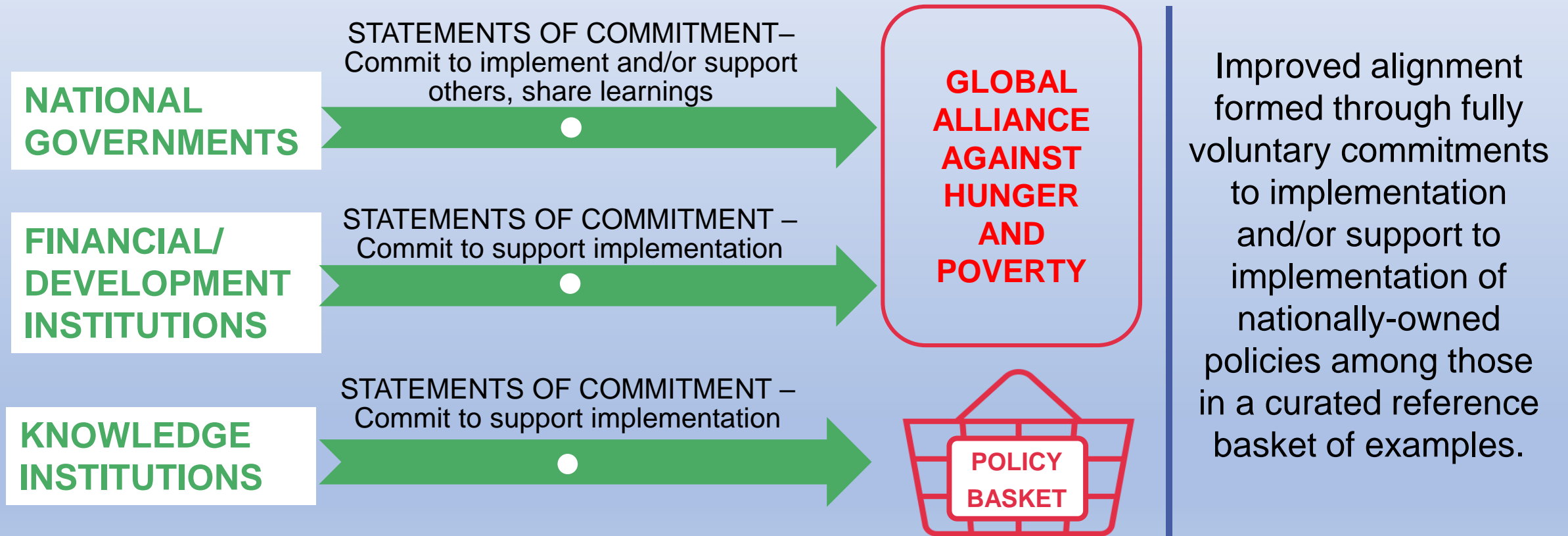
# CONSTITUENT PILLARS OF GLOBAL ALLIANCE



**THE ALLIANCE'S PROPOSED THREE PILLARS AND CORE BASKET OF TRUSTED POLICIES:  
GATHER RESOURCES AND EXPERIENCE WHERE THEY ARE; CHANNEL THEM TO WHERE THEY ARE MOST NEEDED.**



# ALLIANCE OPERATION AT GLOBAL LEVEL – FORMING A WEB OF VOLUNTARY COMMITMENTS FOR PARTNERSHIPS

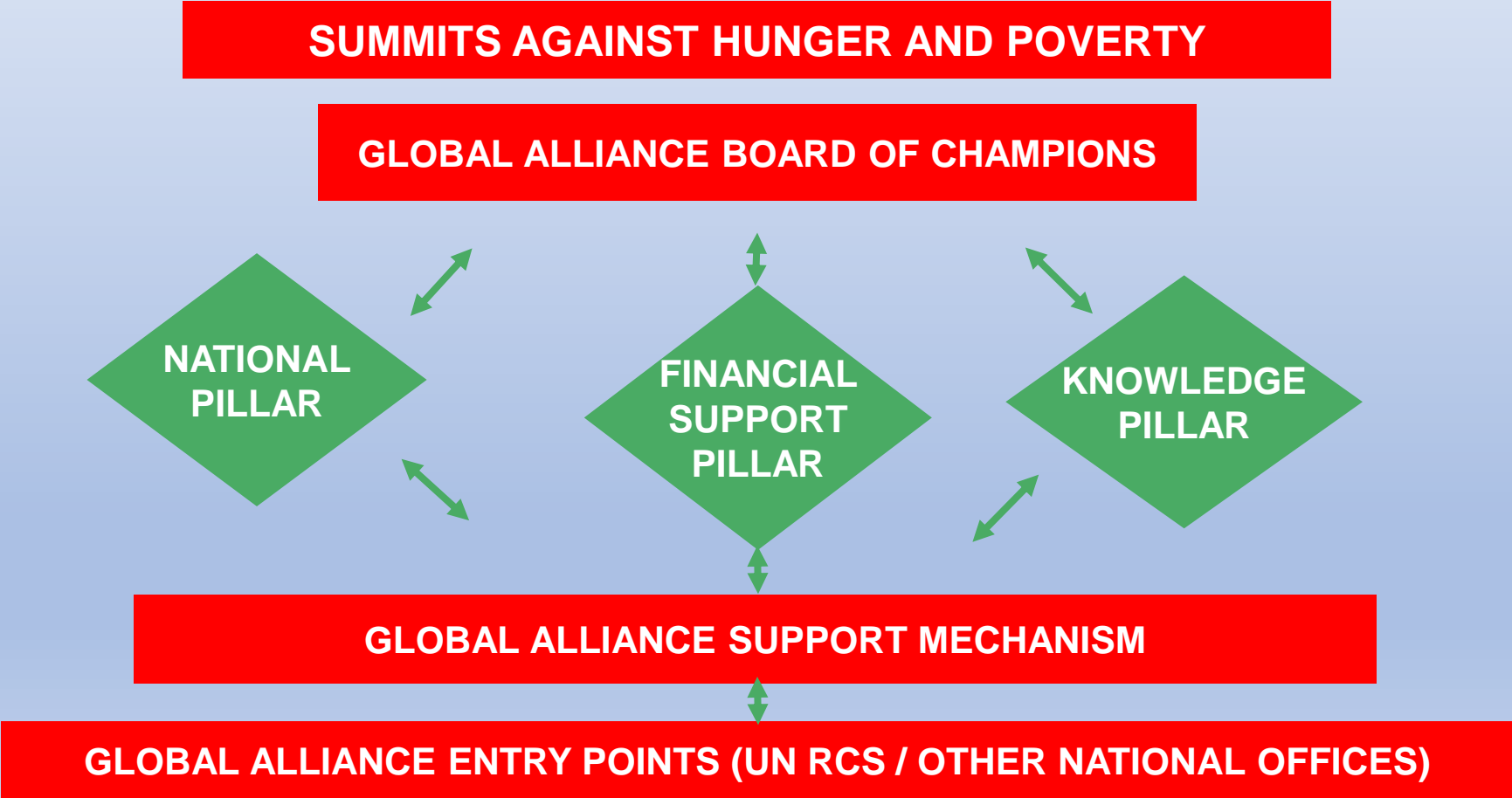




# GOVERNANCE OF THE GLOBAL ALLIANCE



**NIMBLE, EFFECTIVE GOVERNANCE ACTS AS COORDINATION MECHANISM ACROSS NETWORKS AND CONSTITUENT PARTS**  
**ANNUAL TOPMOST LEVEL GATHERING INTENDED TO KEEP MOMENTUM AND HIGH PRIORITY ACROSS THE SYSTEM**



# OPERATIONAL ASPECTS KEY TAKEAWAYS

---

- Open membership and global, voluntary participation;
- Summit process to drive alignment and political will throughout the system
- Building and rallying voluntary global partnerships in favor of member countries based on explicit commitments
- Action-driven, focused on resourcing and the “how-tos”, at the national-scale program/policy level
- Not burdening countries with formulating new frameworks or national strategies instead helping to implement parts of existing one
- Flexible partnership model can help in leveraging a wide number of initiatives



# Road to the Alliance: process and milestones

## Lead up to the March meeting – Written consultations

- Electronic Consultation on Policy Basket Criteria and Template
- Submission of remaining draft deliverables

## During the March Meeting - Brasília

- Criteria and Template for Policy Basket Approved
- Remaining draft deliverables debated and reviewed

## From March to May – written consultations and Washington IMF/WB Spring Meeting

- Electronic consultation on conforming the Policy Basket
- Electronic consultation and exchanges on draft Declaration and Other deliverables
- Report on mapping financing sources presented and discussed in April (Washington, hybrid/online event)

## During the May meeting – Teresina

- Draft Ministerial declaration approved
- Convergence on Global Alliance Terms of Accession and Governance framework achieved
- Ongoing Policy basket work presented and debated

## July – Ministerial Meeting

- Adoption of Ministerial Declaration
- G20 Endorsement of Global Alliance
- Finalized Reports Launched

## From July to November – Championing the Alliance

- Building interest in G20 and Other countries
- Partnerships with funds, IOs, MDBs, think tanks and others
- Refining and enriching the policy basket
- Structuring Governance

# HOW CAN MACS INSTITUTIONS CONTRIBUTE?

---

- **Individually:** consider JOINING the Knowledge Pillar of the Alliance and become a potential knowledge partner for supporting country-led policy and programme implementation.
- As an Alliance member, Knowledge and research institutions can also contribute to the composition and information base of the reference policy basket itself
- As a group:** MACS-G20 can support the Alliance by inserting a strong reference
- in its communiqué, help to raise awareness among agricultural research institutions.

The logo graphic consists of several white, curved, overlapping lines that form a stylized, flame-like or wave-like shape, positioned to the right of the 'G20' text.

**G20**  
**BRASIL 2024**

CONSTRUINDO UM MUNDO JUSTO  
E UM PLANETA SUSTENTÁVEL